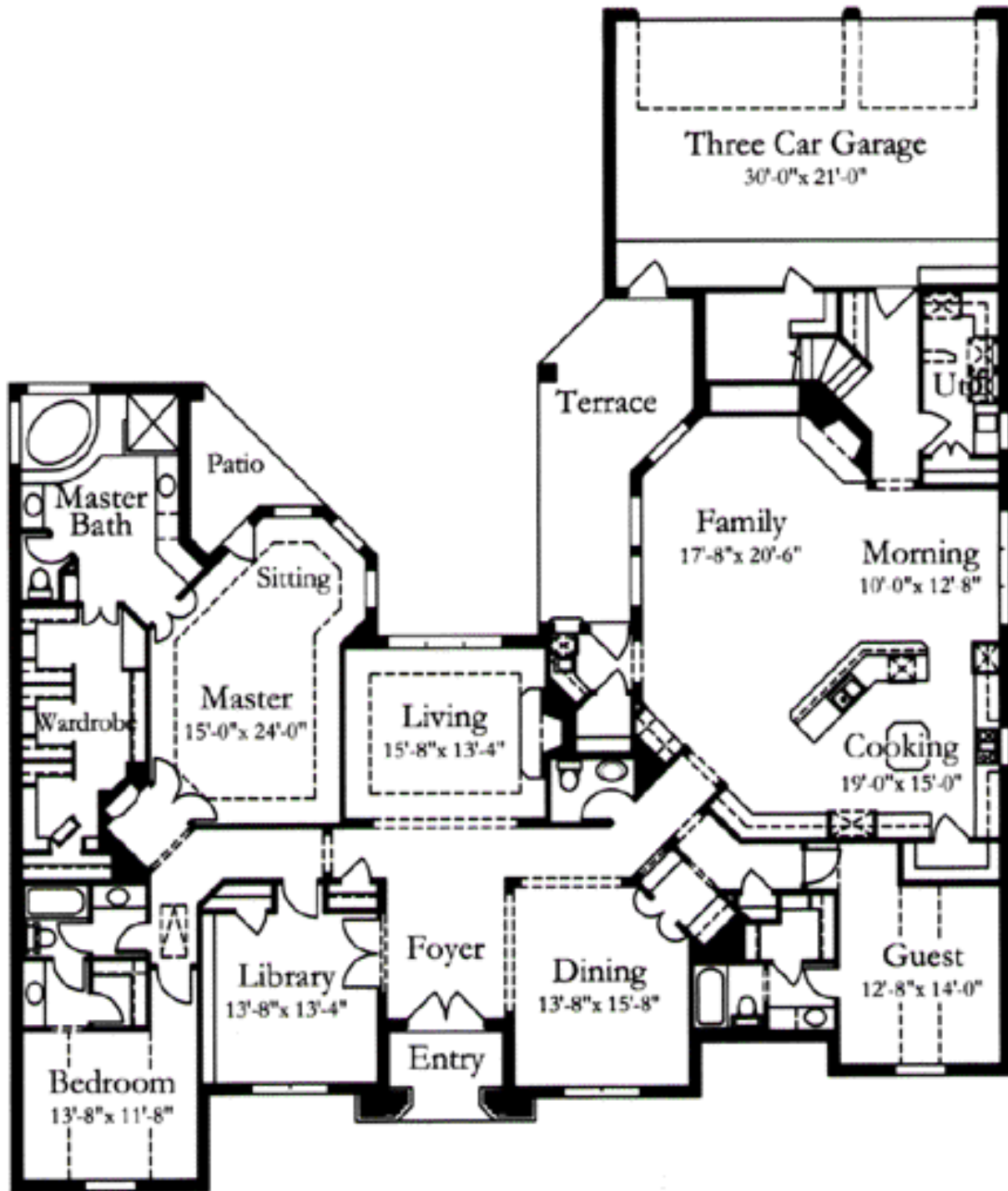


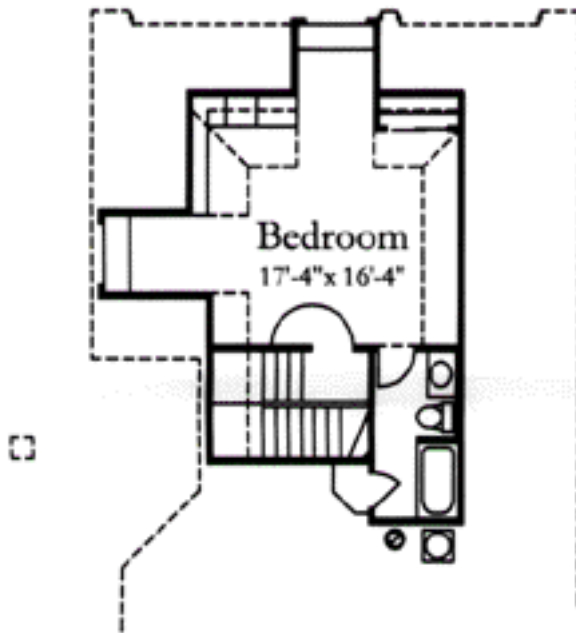
7531 Yamini



Located in the picturesque subdivision of Highland Estates with rolling hills and mature trees, this traditional Grayson Custom Home contains over 4680 air-conditioned square feet. Placed on an oversized lot, this natural stone and brick veneer home has four large bedrooms, four and a half baths, three living areas, two dining areas and a three car garage. The interior is graced with luxurious granite kitchen countertops, an abundance of hardwood floors, decorator selected plumbing and lighting fixtures, custom cabinets, moldings and many additional features. Energy efficiency and structural integrity highlight this exceptional residence.



First Floor Plan



Second Floor Plan

7531 Yamini

- Four Bedrooms
- Four and Half Bathrooms
- Three Living Areas
- Three Car Garage
- Two Fireplaces
- Library
- Three Zones of Heat and Air
- Optional Circular Driveway